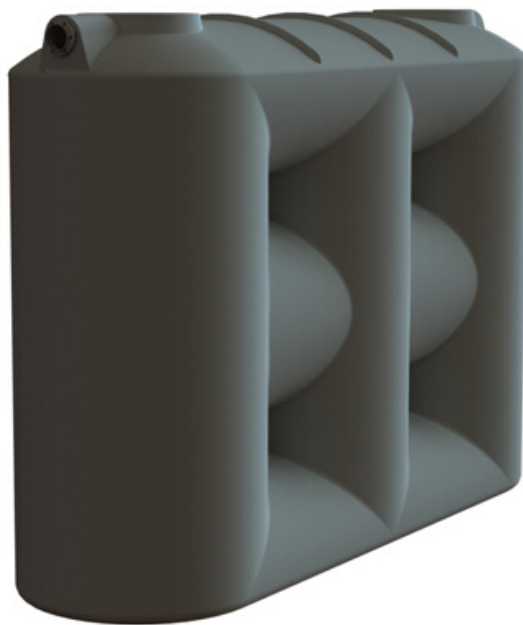




## NEW 5000L SLIMLINE WATER TANK



### **BIGGER THAN EVER.**

For the first time, Rotoplas is introducing a 5000 litre slimline water tank. Connect bathrooms, kitchen, laundry, outdoor taps, the whole works. Built for greater storage capacity and greater sustainability.

Featuring the same sleek design and super strength, but bigger than ever.

Code: SWT5000

Profile: Smooth

Capacity (L): 5000

Dimensions (mm): 3180L x 960W x 2190H

Available in over 20 colours.